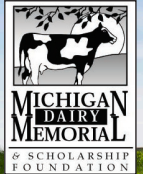
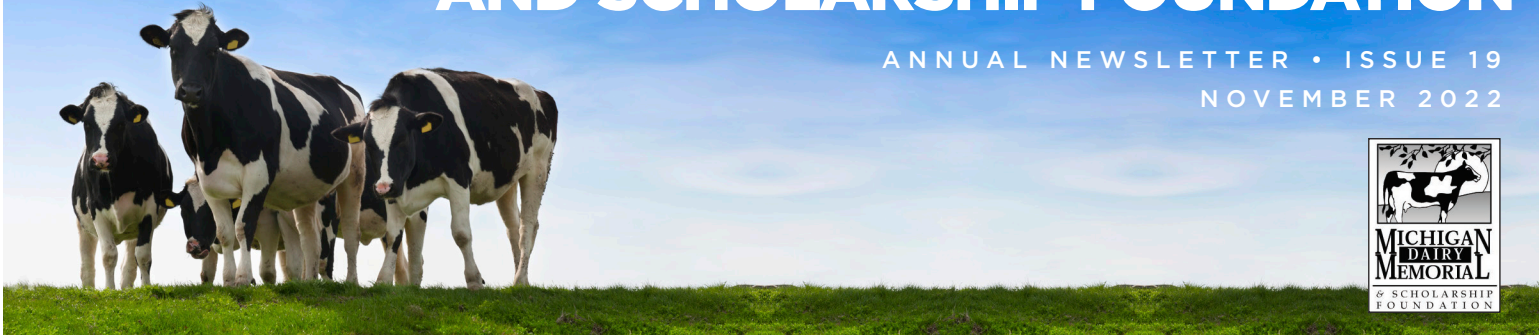




MICHIGAN DAIRY MEMORIAL AND SCHOLARSHIP FOUNDATION

ANNUAL NEWSLETTER • ISSUE 19
NOVEMBER 2022



MDMSF Scholarships Fund: At A Glance

Thanks to the generous support of donors, the Michigan Dairy Memorial and Scholarship Foundation (MDMSF) at Michigan State University (MSU) is proud to highlight an impressive list of scholarships:

- \$3,000 over two semesters to first-year students
- \$3,500 over two semesters to sophomores, juniors and seniors
- **Glenn and Anne Lake Scholarship** - \$8,500 over two semesters
- **Russel Erickson Scholarship** - \$6,000 over two semesters
- **Donald and Valera Murray Scholarship** - \$5,000 over two semesters
- **Harold and Lillian Gremel Scholarship** - \$5,000 for a student in veterinary school
- **Red and Edna Cotter Purina Memorial Scholarship** - \$5,000 for a student in veterinary school (preference to those with international interest)
- **John and Barbara Dilland Scholarships** - \$5,000 over two semesters for students majoring in Agribusiness Management

- **Jack and Betty Barnes International Scholarship** - scholarships for international experiences
- **Archie Studer Scholarship** - \$5,000 over two semesters for a student with interest in dairy breeding or production
- **Nick Bellows Scholarship** - \$5,000 over two semesters for a student with interest in dairy promotion
- **Velmar Green Scholarship** - \$5,000 for a second-year student in the Dairy Management Program of the Institute of Agricultural Technology
- **George and Shirley Hazle Scholarship** - \$5,000 over two semesters for a student with a strong 4-H background
- **Gary and Carolyn Trimner Scholarship** - \$5,000 over two semesters for the MMPA Food Systems Fellowship intern or a veterinary student pursuing a career in bovine medicine

Funding for the MDMSF scholarships comes from generous donations from individuals, firms and corporations wishing to honor members of the dairy industry who have performed distinguished services for Michigan's dairy industry.

2021-22 MICHIGAN DAIRY MEMORIAL AND SCHOLARSHIP FOUNDATION BOARD OF DIRECTORS

President: Eric Frahm, Michigan Milk Producers Association

Vice-president: Matt Wood, at-large

Secretary: Dr. Miriam Weber Nielsen, MSU Department of Animal Science

Sheila Burkhardt, at-large

Jeff Bushey, at-large

Scott Corrin, Dairy Farmers of America

John Dilland, at-large

Phil Durst, at-large

Dr. Mark Fox, at-large

Ken Gasper, CentralStar Cooperative

Velmar Green, at-large

Bryan Hull, Dairy Farmers of America

Dana Sue Kirk, at-large

Carl Kohlhoff, at-large

Bridget Moore, at-large

Dwight Nash, Dairy Farmers of America

Gary Nelsen, at-large

Tom Nugent, at-large

Carl Rasch, Michigan Milk Producers Association

Gene Sickels, at-large

Ben Spitzley, at-large

Brian Troyer, at-large

Zey Ustunol, MSU Department of Food Science and Human Nutrition

Bridgette Voisinet, CentralStar Cooperative

Jason Wadaga, Michigan Dairy Foods Association



PRESIDENT'S MESSAGE

Eric Frahm

Dear members and friends,

I have had the opportunity to serve on the MDMSF Board of Directors for many years and I am honored to currently serve as MDMSF president. This past year we were able to utilize over \$100,000 to invest in students with scholarships and financially support intercollegiate programs like the Dairy Challenge, Dairy Judging and Dairy Products Judging teams.

In my time on the foundation board, I have seen many changes, but just as in the world, the last couple of years have been the most challenging. With students not being on campus, the implementation of virtual learning and escalating tuition costs we need to adapt to continue reaching students and programs where they are today. As we experience more industry consolidation, we have a greater need for people to fill our traditional roles and a growing need for areas like technology and artificial intelligence to keep our industry progressing.

To help us ensure we are utilizing our dollars in the best manner possible with the goal of helping dairy's future leaders, the MDMSF Board appointed a sub-committee to review our scholarship program. We are proud of our long history of supporting dairy students and want to ensure the MDMSF continues to meet the needs of the students of today and in the future.

While we have seen a lot of changes in our world and industry, there are several constants in today's environment including the enthusiasm of students for the dairy industry, the passion of the foundation to help as many students as possible and the generosity of the donors who support the foundation.

Thank you for the opportunity to provide leadership for an organization and community that recognizes how critical it is to develop our industry's future leaders. We look forward to working with more students and donors to continue to advance the dairy community.

Sincerely,

Eric Frahm
President, Board of Directors,
Michigan Dairy Memorial and Scholarship Foundation
Treasurer, Board of Directors, Michigan Milk Producers Association



MDMSF 2021-22 Scholarship Recipients: (L-R): Jared Sanderson, Madison Wieland, Adalee Thelen, Brooke Voelker, Kristen Burkhardt, Kelsey Pasch, Monika Dziuba, Morgan Mathews and Chase Rievert.

In 2021, MDMSF invested over \$100,000 in scholarship support and intercollegiate competition funds for tomorrow's dairy industry professionals.

2022 MDMSF Honoree



CHUCK COURTADE

For over 47 years, Chuck Courtade of Dairy Farmers of America (DFA) has served dairy farmers in his home state of Michigan and across multiple states. Chuck is currently Senior Customer Account Manager for DFA's Mideast sales and marketing team. He works with customers on a regular basis and previously was a Member Services Manager, overseeing field staff within the Michigan/Indiana region.

"Chuck has a wealth of knowledge and experience in the industry and works diligently on behalf of the co-op members," his nominator said. "He is able to bring creative solutions and value-added ideas to the table with his knowledge, commitment and passion for the industry."

Growing up around Grand Rapids, Michigan, that passion and commitment for agriculture began at a young age. Chuck, who lived on a farm until he began the fifth grade, always worked and spent time around family-run operations. Once he graduated from Davenport University, he returned to his roots: working for family farms.

Chuck held several positions with Independent Cooperative Milk Producers Association prior to the merger with DFA, allowing him the opportunity to get to know multiple generations within the same families.

His more than four decades of work have held many memories and learning experiences, from recalculating milk checks by hand when the market administrator miscalculated the price to being a part of the merger with DFA. He has always been driven to work in the best interest of his dairy farmer members.

"Dairy farmers are truly the best people in the world," Chuck said. "My family and I have been blessed to have so many wonderful friends as a result of this industry."

Beyond DFA, Chuck is involved in his community, church and the dairy industry. He has served various roles on the Michigan Dairy Conference, Michigan FFA Foundation Board, Michigan Dairy Industry Review Committee, Michigan TB Committee and MDMSF at MSU.

Chuck and his wife of over 43 years, Beverly, reside in Comstock Park, Michigan. They have three grown children and four grandchildren.

2022 MDMSF Honoree



KATHY LEE, PH.D

Kathy Lee was born and raised on her family's dairy farm near Grand Ledge, Michigan. It was here where the lifelong dairy educator's passion was first fueled for the industry she came to embody through her professional career and volunteer commitments.

Kathy, who was widely respected for industry advocacy, dedication to producers and championing of dairy youth programs, passed away May 28, 2019.

Kathy graduated from MSU in 1977 with a Bachelor of Science degree in dairy science. She completed her Master of Science program in dairy cattle breeding and genetics at Virginia Polytechnic Institute and State University and earned a Ph.D. in dairy cattle breeding and genetics from Iowa State University.

She started her professional dairy science career as an assistant professor and Extension dairy specialist in the Dairy Science Department at Virginia Tech, then applied her expertise in dairy cattle breeding and genetics at the Holstein-Friesian Association of America. In 1995, she returned to Michigan where she joined MSU Extension as a dairy educator, a role she still performed at the time of her death. Kathy was known as an astute editor and critical reviewer and edited the Michigan Dairy Review.

She maintained her membership at the American Dairy Science Association and the Michigan Association of Extension Agents and served for many years on the Michigan Dairy Herd Improvement Association and more recently for the MDMSF. She shared her passion for the dairy industry with youth at regional and national dairy quiz bowl competitions.

Kathy was awarded the President's Citation from the Michigan Association of Extension Agents and was part of the State Team Award presented by Epsilon Sigma Phi (MSU) in 2000. Lee was honored by the Missaukee County Conservation District with its Friend of Agriculture honor in 2003 and received the Outstanding Service to Agriculture award from the Michigan Milk Producers Association Ewart Local in 2006. She was presented posthumously with the 2019 Pioneer Award by CentralStar Cooperative.

It is with deep respect and appreciation for Kathy's contributions that the Board of Directors recognizes her as a Foundation Honoree.

2022 MDMSF Honoree



DONALD MARTELL

Don Martell started working with the Michigan dairy industry in 1975. He grew up on his family's dairy farm in Berrien County near Three Oaks, MI, and graduated from MSU in 1975 with a Bachelor of Science in dairy science. His education turned into a love for the dairy industry, and he always promoted the dairy industry and his alma mater.

Don worked for five years (1975-1980) for MSU Extension and the Michigan Dairy Herd Improvement Association (DHIA) as a fieldman. He then moved into dairy nutrition. He was a dairy consultant for Purina Mills for 21 years (1980-2001) and then with Diamond V as a dairy field technical specialist for 17 years (2001-2018). In those roles, he provided sales and technical assistance to dairy farmers, nutritionists and veterinarians in the U.S. and Canada. He is widely recognized as an expert in feeding management as a result of his work conducting TMR and feeding audits on dairy farms.

Since 2018 he has served as an instructor in the MSU Department of Animal Science, teaching dairy herd feeding management. He has also lectured on dairy feeding management to students in the large animal veterinary programs at MSU and Purdue University.

Don has been a member of the American Dairy Science Association (ADSA) for 35 years. He also is a member of the American Registry of Professional Animal Scientists (ARPAS) for 35 years and he served as a board member of its Midwest Chapter 2014-2017. Martell has been involved for many years with the Tri-State Dairy Nutrition Conference, serving two terms as a planning board member from 2015-2017.

Don has an unbelievable talent for training people both as nutritionists and dairy producers. His tremendous passion for the dairy business is shadowed by his desire to help people, and he is highly respected for his willingness to walk barns, shake out TMR rations, make ration nutritional adjustments and counsel producers and nutritionists. His humble nature always has him giving the credit to his team. It goes without saying that his engagement and leadership helps others succeed in the dairy industry.

Today, Martell resides in DeWitt with his wife Marie and their two daughters, Alina and Lana.

2022 MDMSF Honoree



TOM MICHALEK, DVM

Dr. Thomas (Tom) Michalek was born and raised on the family dairy farm in Perry, MI with his parents, George and Frances, and 3 brothers, Monsignor George, Ronald and Jeffery. Tom graduated as valedictorian of his high school class and subsequently graduated from the College of Veterinary Medicine at MSU in 1981.

Tom practiced as a veterinarian for 38 years at Thumb Veterinary Services (previously known as Deckerville Veterinary Clinic). As a co-owner of the practice, he worked primarily with dairy clients. In addition, Tom served as an Adjunct Associate Professor at MSU for students in the preceptorship program. He mentored over 100 veterinary students over the years, inviting them to live with his family, ride along on his farm calls and observe daily practices at the clinic with himself and other veterinarians to provide them a glimpse of the broad spectrum of veterinary medicine.

Tom served on the Michigan Board of Veterinary Medicine and was a member of the American Veterinary Medical Association, Michigan Veterinary Medical Association, American Association of Bovine Practitioners and the Thumb Veterinary Medical Association for his entire career.

In his spare time, Tom volunteered many hours to the Sanilac County 4-H and FFA programs by checking in animals at the fair and supporting interested youth in agriculture and animal science. As a youth, Tom was an FFA member and state FFA officer as well as participating in 4-H in Shiawassee County. In addition to his veterinary and agricultural commitments, Tom was a member of the Knights of Columbus in Sandusky where he was the financial secretary for over 35 years, loved to golf and bowl, enjoyed singing and especially loved the Spartans. Green and white were his favorite colors!

Tom died of pancreatic cancer in Zephyrhills, Florida, on April 4, 2022. Tom leaves behind his cherished wife Lucinda, son Nicholas and wife Jeanna, son Matthew and wife Beck, daughters Sarah and Elizabeth and two very special granddaughters, Shelby and Sophia.

CELEBRATE DAIRY LEADERS WITH THE GIFT THAT KEEPS GIVING

One of the ways the Michigan Dairy Memorial and Scholarship Foundation (MDMSF) grows its endowment fund is by honoring individuals for their distinguished service to Michigan's dairy industry. More than 225 individuals have been named MDMSF Honorees since the foundation's establishment over 50 years ago.

A gift of \$1,000 or more to the MDMSF provides permanent recognition and honors a dairy leader for their service and contributions to the dairy industry. Foundation Honorees receive personal recognition from the foundation and their names are inscribed on a plaque in Anthony Hall at MSU. Honoree biographies and photographs are kept in permanent records in the MSU Department of Animal Science. In addition, photographs of MDMSF Honorees are displayed at the MSU Pavilion for Agriculture and Livestock Education.

The items needed for naming an MDMSF Honoree include: a \$1,000 contribution to the MDMSF, an 8x10 photo of the honoree and a one-page biography on the honoree. Many times the presentation to an MDMSF Honoree takes place at an industry or MDMSF event. At other

times, an individual is honored posthumously for their service to the industry through a presentation to the deceased honoree's family.

By honoring individuals through the MDMSF, donors are not only recognizing individuals for their accomplishments in the industry, but they are also investing and providing support to future dairy leaders. As the foundation endowment grows, additional scholarships can be awarded. With the increasing costs of higher education, scholarships often make the critical difference in the lives of students, enabling them to achieve their dreams for the future.

Naming someone as an MDMSF Honoree is a fitting tribute for recognizing someone who has served this great industry of ours. If you are interested in honoring someone through the MDMSF, contact:

- Any MDMSF board member
- Dr. Miriam Weber Nielsen at 517-432-5443 or maw@msu.edu
- CANR Development office at 517-355-0284

MAKE A CONTRIBUTION TO MDMSF

When the occasion suggests flowers, consider a living, growing tribute.



MICHIGAN DAIRY MEMORIAL AND SCHOLARSHIP FOUNDATION

Where the earnings provide scholarships to worthy students in dairy industry-related fields.

Make checks payable to: Michigan State University
Designate: Michigan Dairy Memorial and Scholarship
Foundation (A10901)

MAIL TO:

Dr. Miriam Weber Nielsen
Department of Animal Science
Michigan State University
2265 Anthony Hall, 474 S. Shaw Lane
East Lansing, MI 48824-1225

GEORGE AND SHIRLEY HAZLE SCHOLARSHIP**Brooke Voelker**

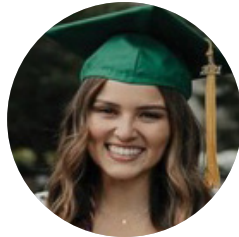
Paris, MI

Brooke Voelker, a junior in Animal Science, plans to pursue a career as a dairy cattle nutritionist upon graduation in 2023.

**GENERAL SCHOLARSHIP****Serenity Bonilla**

Whittier, CA

Serenity Bonilla, a senior in Animal Science, plans to attend veterinary school upon graduation with the goal of operating a private practice for both large and small animals.

**AG TECH SCHOLARSHIP****Rachael Bosse**

Moline, MI

Rachael Bosse, an Animal Science major with a concentration in Dairy Industry, is a Dairy Club member and plans to pursue a career as a dairy nutritionist upon graduation.

**GENERAL SCHOLARSHIP****Katie Butler**

Gaylord, MI

Katie Butler, a senior in Animal Science and Microbiology, served as treasurer of the MSU Horseman's Association and plans to pursue a career as a veterinarian.

**GARY AND CAROLYN TRIMNER SCHOLARSHIP****Monika Dziuba**

Riverview, MI

Monika Dziuba, a third-year student in Veterinary Medicine, competed on the National Dairy Challenge team and plans to pursue a career as a dairy veterinarian.

**RED AND EDNA COTTER SCHOLARSHIP****Ellen Launstein**

Mason, MI

Ellen Launstein, a fourth-year student in Veterinary Medicine, will begin an associate veterinary position with Lodi Veterinary Care in Wisconsin this spring.

**GLENN AND ANNE LAKE SCHOLARSHIP****Kristen Burkhardt**

Fowlerville, MI

Kristen Burkhardt, a senior in Agribusiness Management, recently became a dairy marketing specialist for Cargill.

**GENERAL SCHOLARSHIP****Mikayla Bowen**

Addison, MI

Mikayla Bowen, a junior in Animal Science, was a member of MSU's first-place Dairy Challenge team and plans to pursue a consulting career within the dairy industry.



GENERAL SCHOLARSHIP

Cora Schau

Buchanan, Michigan

Cora Schau, a senior in Animal Science from Buchanan, Michigan, is the recipient of a scholarship from the Michigan Dairy Memorial and Scholarship Foundation. Schau is a @lymanbriggs student and hopes to earn a DVM in production or mixed animal medicine. Schau is a member of the Livestock Judging Team and the MSU Shooting Sports Club.



NICK BELLOWS SCHOLARSHIP

Kelsey Pasch

Beal City, MI

Kelsey Pasch, a senior in Animal Science, plans to obtain a position within the dairy industry with a focus on nutrition, sales and marketing, education and promotion.



RUSSEL ERICKSON SCHOLARSHIP

Chase Rievert

Bay Port, MI

Chase Rievert, a senior in Animal Science, plans to pursue a dairy industry career upon graduation.



VETERINARY SCHOLARSHIP

Jared Sanderson

Sandusky, MI

Jared Sanderson, a third-year Animal Science student, has participated in the Dairy Challenge Program, MSU Dairy Club and MSU Block and Bridle Club, and plans to pursue a veterinary career.



JOHN AND BARBARA DILLAND SCHOLARSHIP

Adalee Thelen

St. Johns, MI

Adalee Thelen, a freshman in Animal Science with an Agribusiness Management minor, is a member of the MSU Dairy Club and plans to pursue a career in the dairy industry.



HAROLD AND LILLIAN GREMEL SCHOLARSHIP

Emmy Schuurmans

Caledonia, MI

Emmy Schuurmans, a third-year student in Veterinary Medicine, hopes to work in private practice as a dairy practitioner.

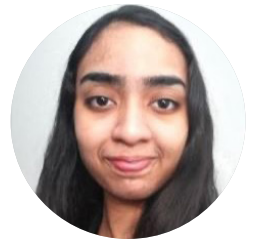


MURRAY SCHOLARSHIP

Rajsri Raghunath

Mumbai

Rajsri Raghunath is studying food science and plans to attend graduate school to focus on research in food safety and the microbiology of dairy foods.



STUDER SCHOLARSHIP

Calvin Bontekoe

Howell, MI

Interned at CentralStar Cooperative while working on his family dairy. Plans to work in the dairy industry following graduation.



GREEN SCHOLARSHIP

Drew Neyer

Shepherd, MI

Worked on family dairy farm and other Michigan dairy farms to gain experience in dairy herd management. Participated in 4-H and FFA, and is involved in Alpha Gamma Rho, Dairy Club, Dairy Challenge and dairy judging at MSU. Plans to work on a dairy farm following graduation.



REGULAR SCHOLARSHIP

BreAnna Laughlin

St. Louisville, OH

Participates in MSU Dairy Club and Block and Bridle. Working on dairy farms to gain experience with dairy cattle in preparation for becoming a veterinarian.

VETERINARY SCHOLARSHIP

Morgan Mathews

Glencoe, MN

Morgan serves as secretary for the DVM class of 2025 and participates in the Food Animal Club. After she receives her DVM, she plans to stay in the Midwest and work in a rural clinic that will allow her to work side by side with dairy farmers and improve the health of their cattle, as well as work with support producers as they raise their livestock.



FIRST YEAR SCHOLARSHIP

Madison Wieland

Cass City, MI

Madison is gaining experience with dairy-related research. She plans to become a veterinarian following graduation.



MARK YOUR CALENDARS

February 28, 2023

Deadline for scholarship applications
(first-time and renewal applications for 4-year students)

For application or more information about MDMSF Scholarships, visit www.ans.msu.edu and click on the "students" link.

DISPATCHES FROM THE ANIMAL SCIENCE DEPARTMENT

from Cathy Ernst, Animal Science Chairperson

The past year has been exciting for the Department of Animal Science as we returned to in-person activities after two years of pandemic restrictions.

Total enrollment of undergraduate students in our department 4-year BS and 2-year Ag Tech programs has surpassed 600 students. Our new Dairy Industry Concentration curriculum launched in Fall 2021 and numbers of students participating in the concentration continues to grow. Experiential learning activities have resumed and MSU students have been very successful.

MSU Dairy Challenge Team

The MSU Dairy Challenge team continues to dominate, winning their 4th consecutive national title in April 2022. Fall dairy judging contests have recently wrapped up and a full report of the season will be available soon, but I want to note the phenomenal year that team member Jessie Nash has had, taking top honors at both the National Intercollegiate Dairy Cattle Judging Contest in Madison, WI and the All-American Dairy Show in Harrisburg, PA, and also placing an impressive 5th at the North American International Livestock Exposition in Louisville, KY.

Accomplishments

Research and Extension accomplishments of our department dairy faculty have recently been featured in numerous news articles. Specific articles can be found online (<https://www.canr.msu.edu/>). In addition, the Spartan Dairy Newsletter is published three times per year and includes news and features on dairy research, Extension and student activities.

Competitors

Our graduate and undergraduate students have been active in participating in professional conferences with many receiving top placings in competitions.

At the **Tri-State Dairy Nutrition Conference** in April Kirby Krogstad (advisor Barry Bradford) placed 1st in the PhD competition, Alex Benoit (advisor Adam Lock) placed 1st and Katelyn Goldsmith (advisor Mike VandeHaar) placed 2nd in the MS competition, and Cora Schau (advisor Miriam Weber Nielsen) placed 3rd in the undergraduate competition.

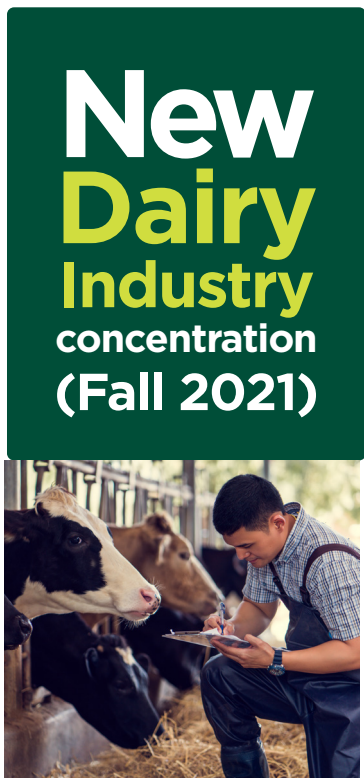
At the **American Dairy Science Association Annual Meeting** in June Thaina Minela (advisor Richard Pursley) placed 1st in the PhD oral contest, Alisson Santos (advisor Richard Pursley) placed 1st and Kristen Gallagher (advisor Zheng Zhou) placed 2nd in the MS poster contest, Sydney Puda (advisor Mike VandeHaar) placed 2nd in the undergraduate oral contest, and Paige Gibb (advisor Richard Pursley) placed 2nd and Samantha McBeth (advisor Richard Pursley) placed 3rd in the undergraduate poster contest.

Friends and Donors

We can't express enough our tremendous gratitude for the support we receive from our alumni and friends. We were pleased to recognize the **Tubergen family** in Ionia with the 2022 Dairy Farmer of the Year award from the department that was presented at the Great Lakes Regional Dairy Conference in February. Also in the spring, MSU dairy science alumnus **William (Bill) Oswalt** established a new endowment to provide discretionary support for the Animal Science department, a gift that will have a long-lasting impact on our teaching, research and outreach missions.

Dairy Research and Teaching Facility Funding

In addition, we are grateful to the many alumni, industry leaders and friends who advocated for state funding support for infrastructure updates to the campus dairy and greenhouse facilities. These state-of-the-art facilities will allow training of students for dairy industry positions, as well as facilitate research directly relevant to industry needs.



TIPS FOR DONORS: DONATING RAISED COMMODITIES

by Jeffrey Bushey, Managing Principal,
Nietzke & Faupel, P.C.

In the last several months, we have seen a large increase in the prices paid for commodities, and many farmers will be facing a larger tax bill. Donating commodities is a good, tax-efficient way to reduce taxes while supporting charities. The 2018 tax act increased the standard deduction. In 2022 it will be (\$25,900 for Married Filing Jointly), greatly reducing the incentive to utilize itemized deductions.

Therefore, cash donations do not generally yield a tax deduction. However, the IRS allows cash-basis farmers to make charitable donations of raised commodity inventory, which has a number of potential tax advantages for farm proprietors.

- Making charitable donations of raised commodity inventory (crops raised in a prior year) avoids the wasting of the federal standard deduction. Normally a cash donation is deducted on Schedule A of Form 1040. If the taxpayer's total itemized deductions listed on Schedule A do not exceed the allowable standard deduction, taxpayers can use the standard deduction. The standard deduction for a married couple filing a joint return for 2022 is \$25,900 and \$28,600 if both are over 65.
- If a taxpayer makes a cash donation but ends up using the standard deduction because the total itemized deductions did not exceed the standard deduction, the cash donation is "wasted". If a farmer-taxpayer donates a portion of his or her raised commodity inventory, the "wasting" of the cash donation is avoided because the charity sells the commodity and not the farmer. The income never appears on the farmer's return.
- Donating raised commodities can decrease self-employment taxes as well. If a farmer sells his or her commodity, the income from the sale is reported as self-employment income and self-employment tax will be paid. If the commodity is donated to a charity the charity sells the commodity and no self-employment income is reported by the farmer.

**Cash
donations
do not
generally
yield a tax
deduction.**

- The donation of raised commodity inventory will also help reduce a farmer's state income tax liability. Michigan does not allow the deduction of charitable donations. A donation of raised commodity inventory to a charity will keep the sales proceeds from the inventory out of the income reported on the farmer's state tax return. Also, if a Michigan farmer has farmland enrolled in the Farmland Preservation program, donating raised commodity inventory can also increase the amount of the farmland tax credit. Farmers in states other than Michigan should check with their tax advisors to determine the state tax implications of donating raised commodity inventory.

The tax rules regarding the donation of raised commodity inventory have some very specific requirements, so be sure to consult with your tax advisor before making a donation of raised commodity inventory for the first time.



Michigan Dairy Memorial and Scholarship Foundation

Michigan State University
Anthony Hall, Room 2265
474 S Shaw Ln
East Lansing MI 48824

Non-Profit Org.
U.S. Postage
PAID
East Lansing, MI
Permit No. 21

Please make checks payable to Michigan State University, designate for MDMSF and forward with this completed form to:

Dr. Miriam Weber Nielsen
Michigan Dairy Memorial and Scholarship Foundation
Department of Animal Science, Michigan State University
Anthony Hall, Room 2265
474 S Shaw Ln
East Lansing MI 48824



Contributions to MDMSF (A10901)

Appeal Code 01034

Enclosed is my total contribution of \$ _____ OR

Enclosed is my initial contribution of \$ _____

Please send me pledge reminders:

_____ annually _____ semi-annually _____ quarterly

Name: _____

Address: _____

Home Phone: _____ Email: _____

Please Send Me More Information on:

- A personal visit or other assistance* *MDMSF Honoree Recognition*
- Joining MSU donor recognition clubs*

